

We're building the new St. Paul's Hospital and health campus to be sustainable and resilient. Built to withstand rising temperatures, extreme weather, earthquakes and flooding to function as a post disaster health care and triage facility.

A HEALTHY HOSPITAL

The new St. Paul's Hospital will be LEED Gold certified. Leadership in Energy and Environmental Design (LEED) is a holistic worldwide standard to create buildings that address climate change, are more resource-efficient, healthy and resilient.

- Buildings and open spaces will be designed to optimize and benefit from natural sunlight and ventilation.
- The building envelope and mechanical systems will be highly energy efficient and sustainable.
- There will be advanced heat recovery systems to minimize waste, maximize efficiency and reduce our carbon footprint.
- The hospital's energy performance will exceed rezoning requirements in the City of Vancouver's "Green Buildings Policy for Rezoning" and "Greenest City Action Plan 2020".
- Roof top gardens, rain gardens, green roofs, and landscaped channels will help capture, filter and re-use rainwater.
- Pervious, or porous paving will control storm water at the source, reduce runoff and improve water quality by filtering pollutants below the surface.



PERSON CENTRED DESIGN

The new St. Paul's Hospital and health campus is designed for people.

- It will lead in the delivery of B.C.'s patient-centred model for health care by providing the highest-quality, integrated, compassionate care, where and when it's needed most.
- There will be several public spaces for health, wellness and community gatherings, including a Civic Plaza, a Wellness Walk, cycling trails, roof top garden, First Nations healing garden, and Sacred Spaces.
- Hundreds of new trees of different varieties will be planted on site, with emphasis on native species to help improve air quality, conserve water, preserve soil, support wildlife and provide shade.
- Future opportunities for workforce housing and a hotel for patients, families, visiting staff and experts.

CONNECTING THE COMMUNITY

Our new hospital will be part of an innovative health campus fully integrated with the surrounding community.

- Improved street layouts as well as a new Wellness Walk and cycling pathways will connect the neighbourhoods of Strathcona, Chinatown, False Creek Flats and Northeast False Creek.
- The new health campus is within easy walking distance to SkyTrain, rail and major bus routes.
- Partnerships will be made to buy local, with local food suppliers and purchasers integral to the new St. Paul's Hospital food system.
- Two child care facilities will be available on site.
- Retail amenities and opportunities will be created along the new High Street and civic plaza.
- New roads and pathways will facilitate efficient movement of emergency vehicles, trucks, vehicles, buses, bikes and pedestrians.

COMMITMENT TO **RESILIENCY**

The new St. Paul's Hospital will be resilient and flexible, built to withstand natural and man made disasters.

- The new St. Paul's Hospital will be seismically and structurally sound to withstand major earthquakes and operate as a post-disaster facility.
- Ample back up fuel capacity will be available to support critical services without interruption in case of a loss of power, water or heat.
- The facility will be built to withstand the estimated global sea level rise and storm surges predicted by the year 2100.
- Critical mechanical, electrical and communications equipment will also be built above the five metre flood construction level (FCL).
- Pre-planning, including geotechnical, environmental and structural studies will ensure engineering solutions integrate seamlessly with resiliency considerations.

FIVE **KEY THEMES**

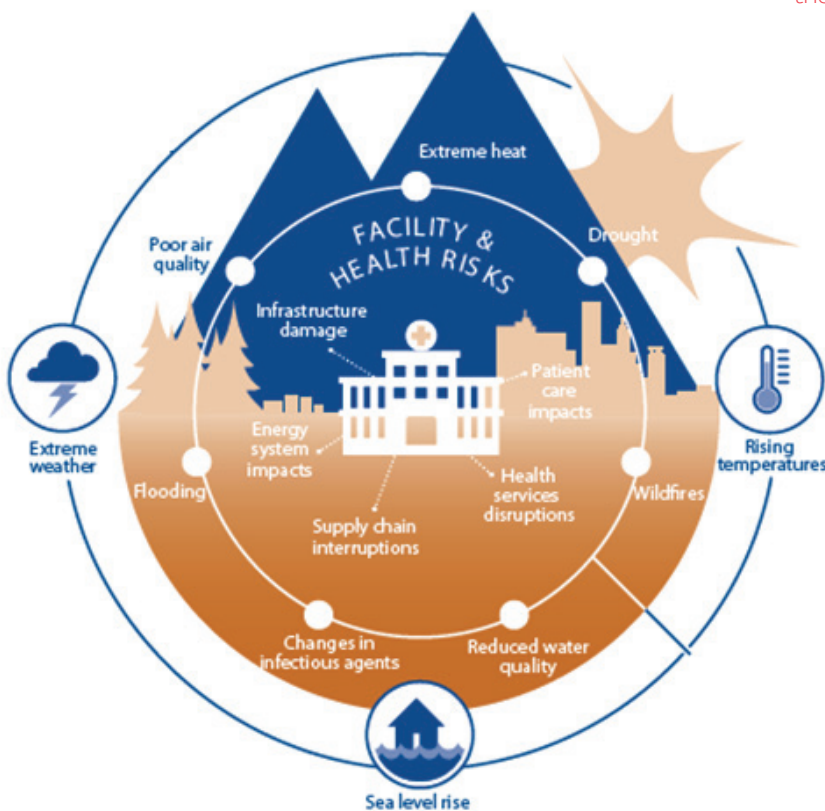
The new St. Paul's Hospital Project team worked closely with the City of Vancouver to develop and exceed sustainability and resiliency strategies realistic to our climate reality. Five key themes were identified:

1. Support staff wellness and productivity during climate shocks and stress.
2. Accommodate increases in hospital visits from community.
3. Back-up on-site and off-site utilities will be available, including water, gas and electricity.
4. Anticipate and prepare for supply chain disruptions.
5. Address extreme heat, wildfire smoke and coastal flooding.

FOR MORE **INFO**

More information about the new St. Paul's Hospital and health campus visit our website at thenewstpauls.ca.

Or, you are welcome to contact us by email at thenewstpauls@providencehealth.bc.ca.



OUR BOLD **VISION**

Providence's vision for the new St. Paul's Hospital and health campus is to lead in the delivery of British Columbia's new model for health care by providing our patients with the highest quality, integrated, compassionate and patient-centred care, where and when they need it most.