



THE NEW  STpaul's

The text 'THE NEW' is in a dark grey, sans-serif font. To its right is a stylized logo consisting of a white four-pointed star with rounded ends, set within a red and grey circular shape. To the right of this logo, the word 'STpaul's' is written in a red, lowercase, serif font, with 'ST' in a larger, bold font.

**Welcome to the new St. Paul's Hospital
Virtual Community Open House**

The text is centered and written in a bold, red, sans-serif font. It is arranged in two lines, with the first line being 'Welcome to the new St. Paul's Hospital' and the second line being 'Virtual Community Open House'.



ST PAUL'S HOSPITAL

JIM PATTISON MEDICAL CENTRE

Introductory Tour: Campus Layout

Buildings, roads, parking

March 2011

An aerial photograph of a city, likely Vancouver, showing a river in the foreground and a large stadium (BC Place) on the left. The city is densely packed with buildings, and a large body of water is visible in the background. Two red asterisks mark specific locations in the city center. Two semi-transparent white boxes with red text are overlaid on the image, pointing to these locations.

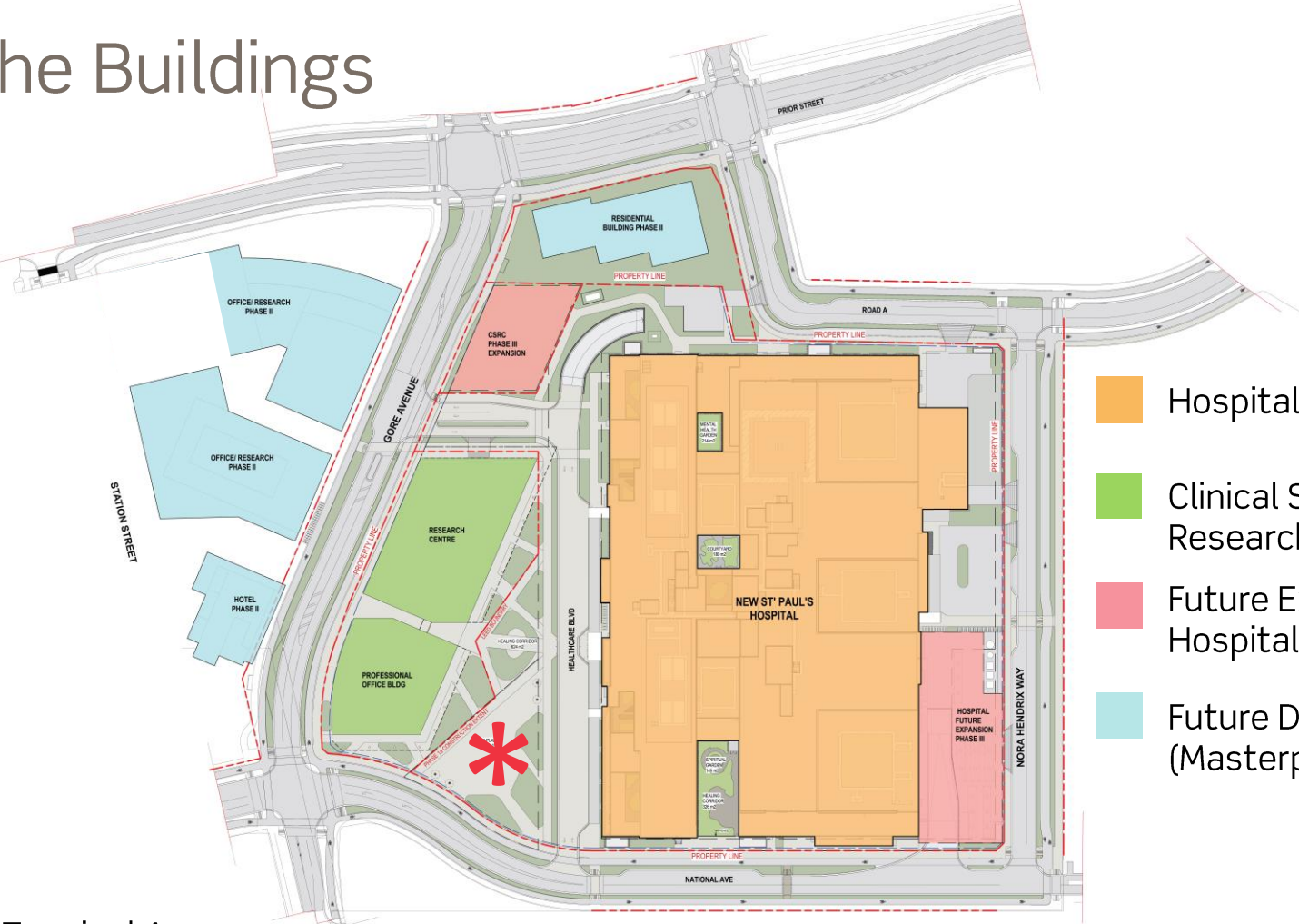
Phase 1B
CLINICAL SUPPORT & RESEARCH CENTRE

Phase 1A
HOSPITAL

The Buildings

Main Street

Terminal Ave



-  Hospital
-  Clinical Support & Research Centre (CSRC)
-  Future Expansions of the Hospital and CSRC
-  Future Developments (Masterplan)



Access & Parking



-  Hospital
-  Clinical Support & Research Centre (CSRC)
-  Future Expansions of the Hospital and CSRC
-  Future Developments (Masterplan)

SkyTrain





St. Paul's Hospital at the Jim Pattison Medical Centre

PCL OVERVIEW

TOGETHER WE BUILD SUCCESS



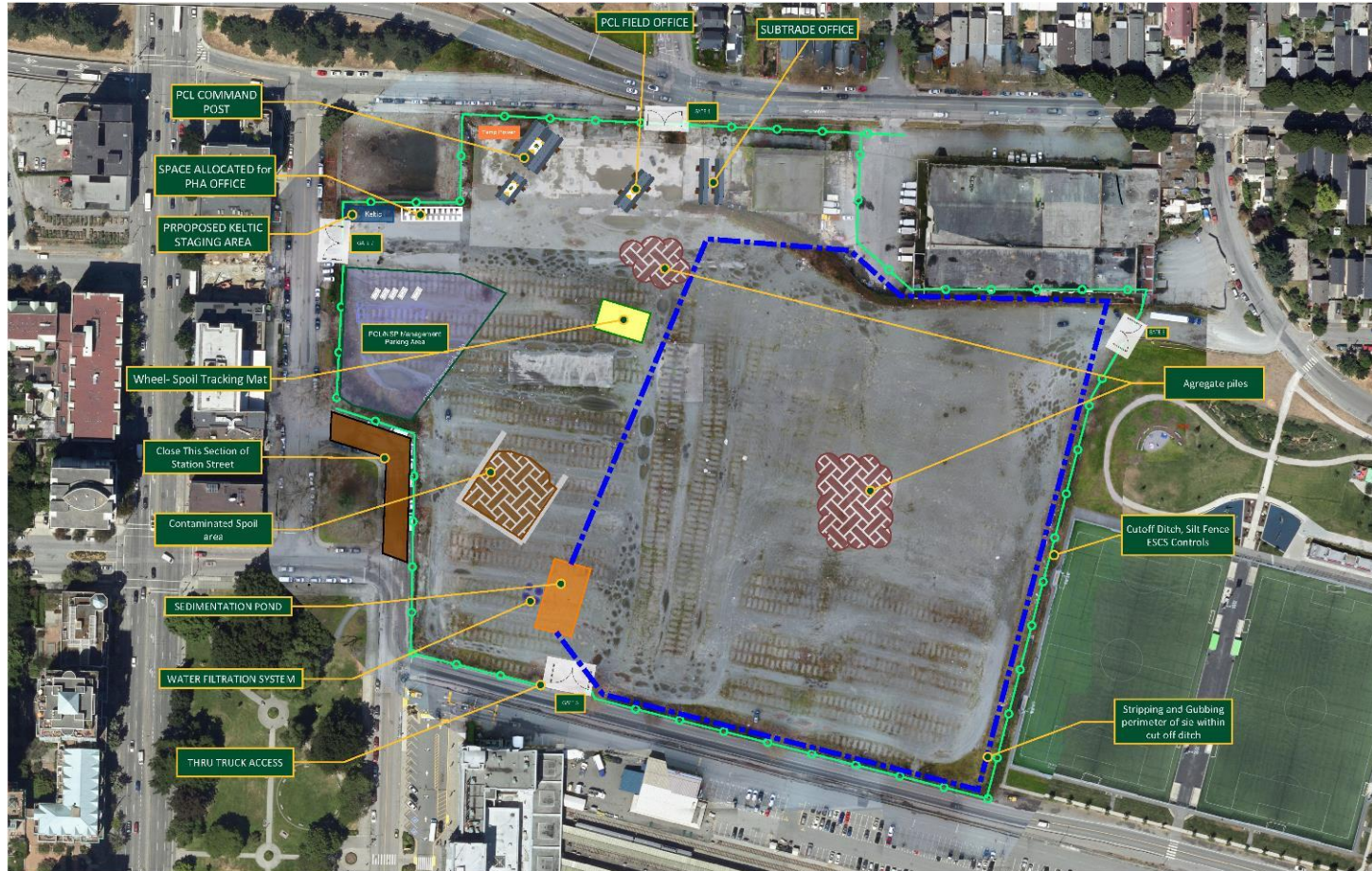
Timelines & Phasing

Construction 2021 - 2027



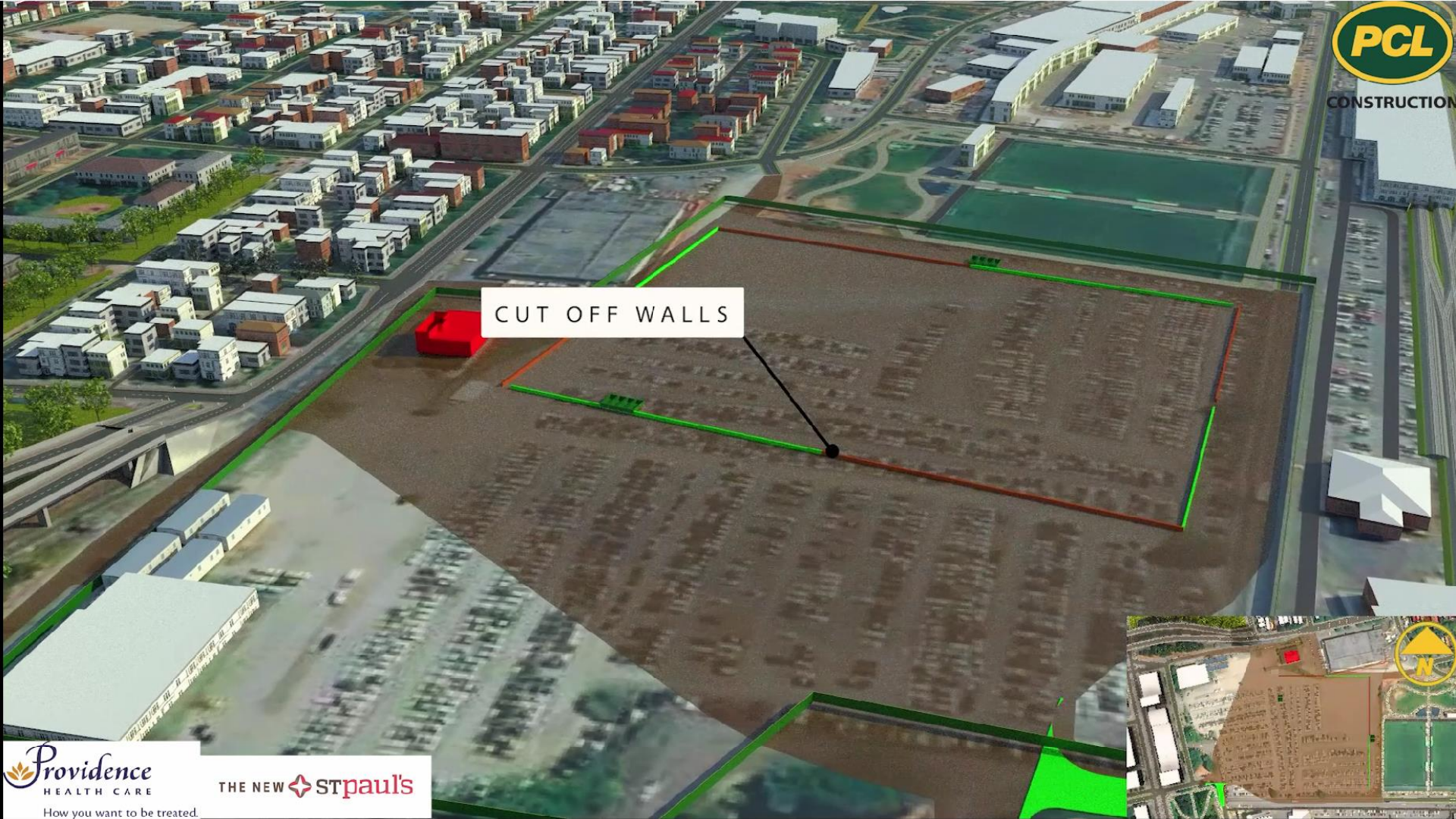


NSP Phase 1a – Site Set-Up (April 2021 – September 2021)

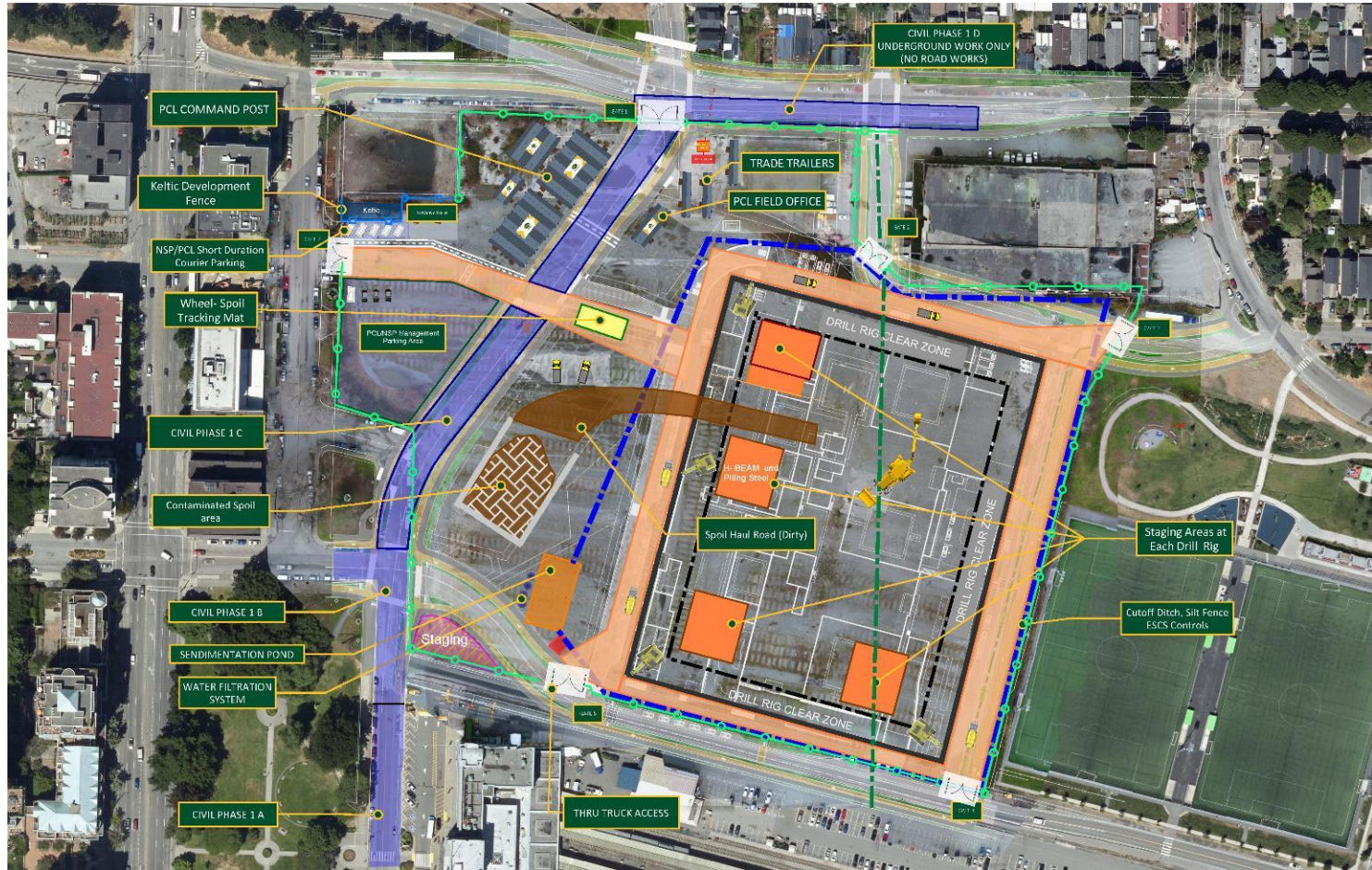


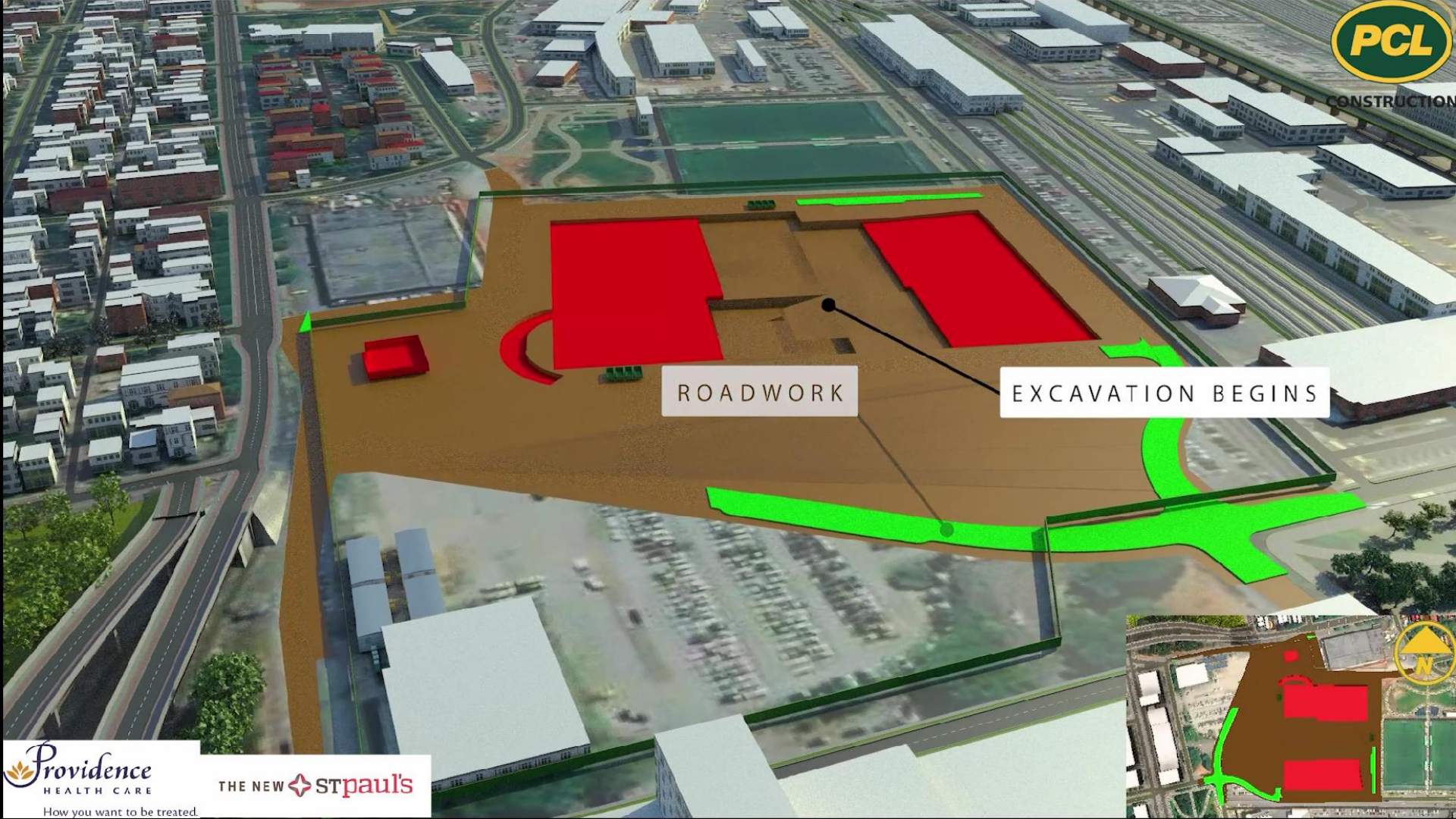


CUT OFF WALLS



NSP Phase 1b – Shoring & Civil (June 2021 – September 2021)





ROADWORK

EXCAVATION BEGINS



NSP Phase 2 – Excavation & Civil (September 2021 – January 2022)





CONSTRUCTION

PARKADE STRUCTURE

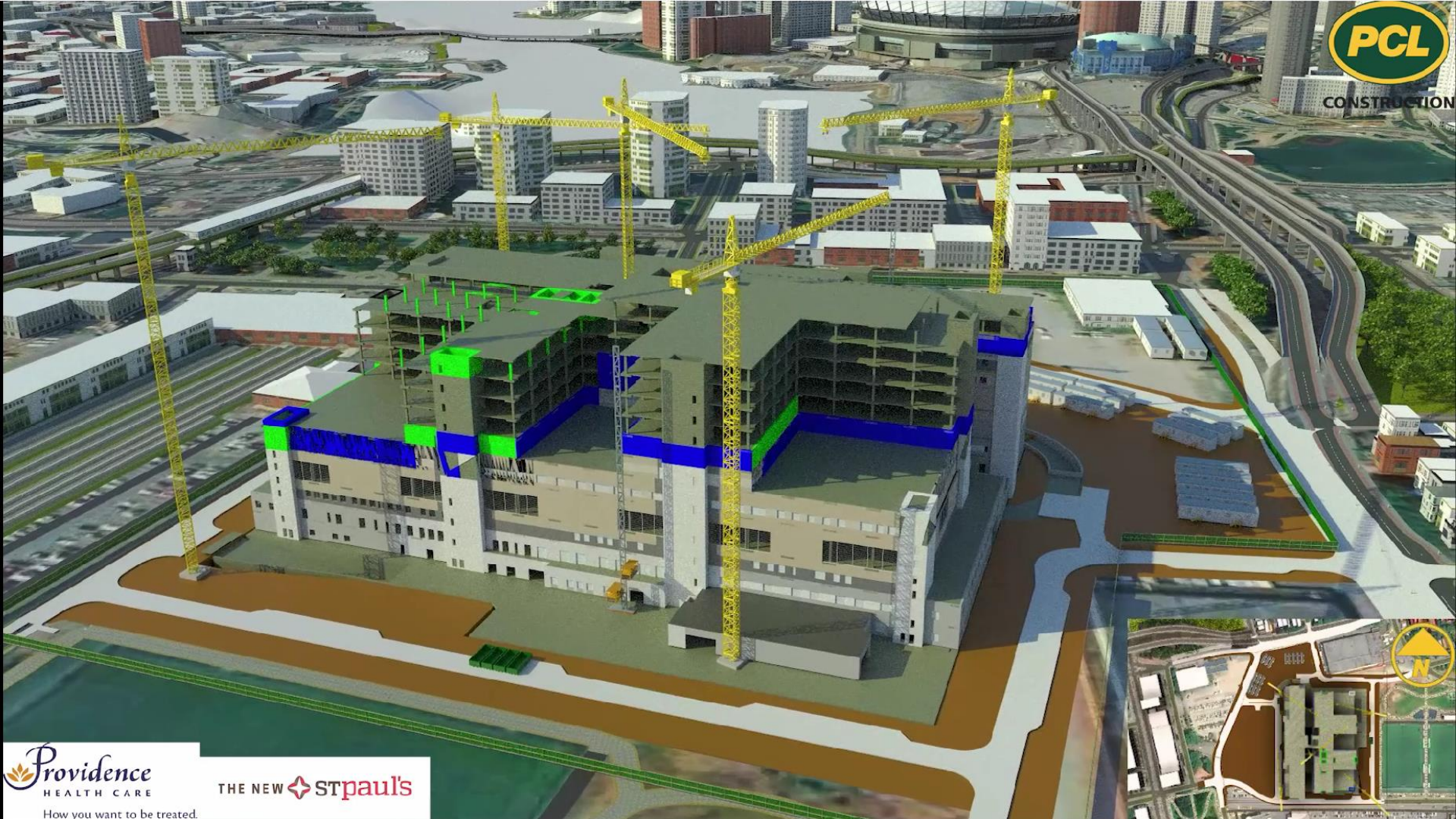


NSP Phase 2 & 3 – Structure & Civil (January 2022 – October 2023)





CONSTRUCTION



Providence
HEALTH CARE
How you want to be treated.

THE NEW  **STpaul's**

NSP Phase 3b – Structure & Envelope (October 2023- April 2024)





CONSTRUCTION



 **Providence**
HEALTH CARE
How you want to be treated

THE NEW  **STpaul's**



NSP Phase 4 – Fit-Out (April 2024 – January 2025)





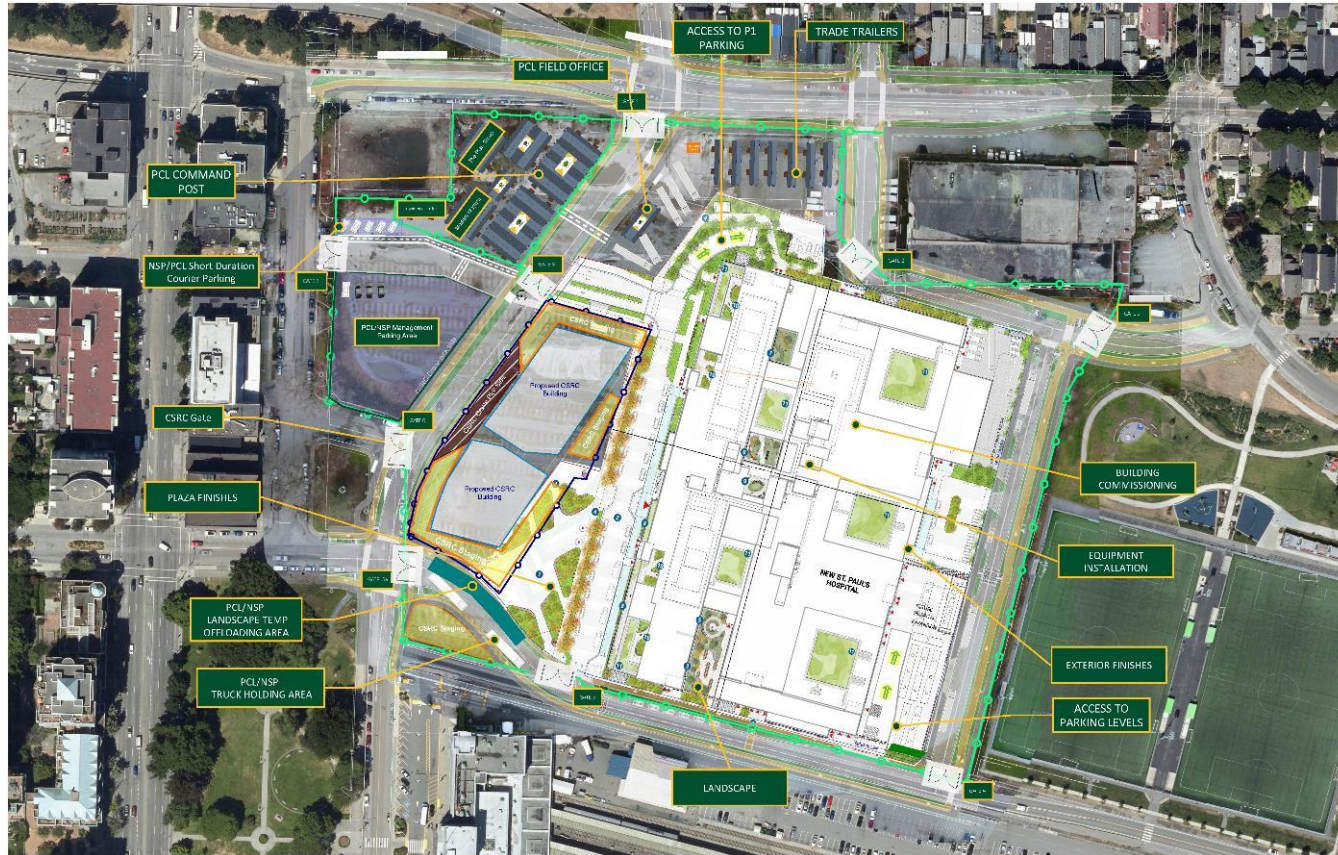
LANDSCAPE AND EXTERIOR FINISHES



How you want to be treated.

THE NEW  STpaul's

NSP Phase 5 – Landscape, Exterior Finishes, Commissioning and Equipment (January 2025 – June 2026)



THANK YOU!





THE NEW  STpaul's

The text 'THE NEW' is in a dark grey, sans-serif font. To its right is a stylized four-pointed star logo with red and grey segments. To the right of the star, the word 'STpaul's' is written in a red, serif font, with 'ST' in all caps and 'paul's' in lowercase.

For further questions, please contact:

PHC: Randene Neill: rneill@providencehealth.bc.ca

General email: thenewstpauls@providencehealth.bc.ca

PCL: Christine MacCormack: cmaccormack@pcl.com